



esXpress has the ability to run backup related commands from within the VI3 client by appending [x] commands to VM Display Names.

Here is the list of the [x] Commands that can be used.

[xFULL] – make a Full Back of the VM now, runs phd-FULL command

[xINDEX], [xDELTA], [xBACKUP] – make a Delta backup of the VM now, runs phd-INDEX command

[xNOW] – Run a backup for the VM.

[xGUI],[xCFG],[xCONFIG][xHELP] – bring up and run the esXpress GUI helper

[xSPECIAL],[xONE] – makes a special backup of the VM now

[xFULLSPECIAL],[xFULLONE]– makes a Full Special Backup of the VM

[xALL] – run Delta backups of all VMs on the Host

[xALLFULL],[xFULLALL] = run Full backups of all VMs on the host

[xFLB] – run a File Level Backup (FLB) for the VM

[xFLBALL] – run a File Level Backup for All VMs.

[xWIPE] – wipes the index of the VM

[xWIPEALL],[xALLWIPE] – wipes the indexes of all the VMs on the host

[xRETRY],[xRETRYFULL] – automatically retry a failed backup

[xSTOPALL] – stop all running backups, set Stop Lock

[xABORTALL] – aborts all running backups, sets the Abort Lock

[xABORT],[xSTOP] – stops the backups of the VM

[xCLEARLOCKS],[xNOLOCKS],[xLOCKS],[xCLEAR] – clears Locks

[xTEST] – Runs a test backup, gathering performance information and testing the configuration without actually doing the backup.

[xNOTES] – Clears the Notes field of the VM for any esXpress information

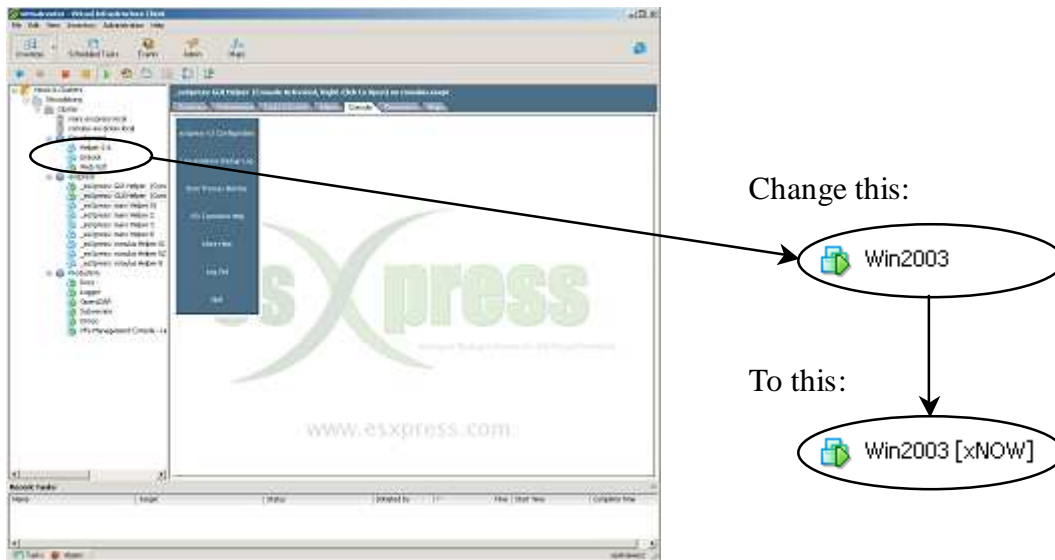
[xALLNOTES] – Clears the Notes fields for All VMs for any esXpress information

Once the esXpress back-end daemon runs the [x] command it is removed from the VM Display Name.

To enable the [x] commands you have to enable the below esXpress configuration option.

Allow [x] Command from VI3 (Yes/No/SingleVM) – When the phd_daemon is enabled, you can issue commands to esXpress from within the VI3 client by updating the VM display name. See *Error! Reference source not found.* below:

Figure 1: Issue [x] Command from VI3



These commands can backup one VM, or all the VMs. These commands are a nice feature, but sometimes you need to turn these off.

- **Yes** – All the [x] commands are enabled.
- **No** – None of the [x] commands are enabled.

SingleVM – Only commands that affect a single VM will be allowed. The commands like [xALL] will not be processed

esXpress v3.1 [x] Commands

Rev 1, May. 2008

www.esxpress.com www.p2v.net

Copyright 2008, PHD Technologies, Inc